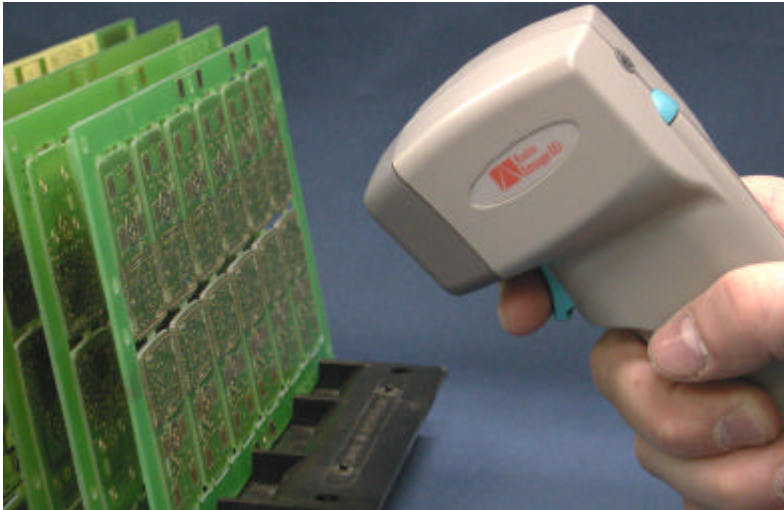


HawkEye 30 Hand Held 1D/2D Scanner



Compact, hand held, one and two-dimensional bar/matrix code scanner with auto discrimination and exceptional application versatility.

The 2D Advantage: More Information in Less Space, Permanent Direct Marking

Matrix codes provide a high information density labeling alternative compared to bar codes. You have to see it to fully appreciate the difference. They can be made very small in size, yet hold over 2000% more information with ease. The two symbols shown here both contain the same ten numeric characters of information (0123456789).



2D Data Matrix Symbol

Feature Size: 10 mils
Physical Size: .14 x .14 in.
Physical Area: .02 sq. in.



1D Code 3/9 Symbol

Feature Size: 7 mils
Physical Size: 1.2 x .19 in.
Physical Area: .23 sq. in.

The 2D matrix label has a 43% larger feature size for easier printing and scanning, yet requires 90% less area! That's only 1/10 the space of a high density bar code! It contains all of the same information, plus powerful read error correction and protection.

Many 2D labels can be generated using existing 1D bar code labeling systems and printers. New 400 and 600dpi printers can print very small high density labels.

Because of its small size it can also be directly and permanently marked using laser etching or peening onto various surfaces like metals, plastics or glass. Direct marking is popular for aerospace, automotive, and electronics application.

System Features

- **Auto discriminates between various codes**
- **Easy "point-and-shoot" targeting system**
- **Ultra-fast decoding**
- **Omni-directional scanning**
- **Light weight, sturdy, self-contained design**

The HawkEye 30 hand held video image scanner incorporates the most advanced video image capture and processing technology for good depth of field and ultra-fast decoding.

Auto discrimination of one and two-dimensional symbols assures simple "point-and-shoot" operation when scanning multiple symbol types. Using a "two point" targeting system makes the hand held positioning of video images as simple as common laser scanning, the HE30 provides an instant "beep" feedback of a good read.

Because the HawkEye 30 offers true omni-directional scanning, there's no need for the critical positioning required for reading many 2D symbologies. It also makes reading 1D symbols easier. Good depth of field, a wide viewing area, omni-directional scanning, and a unique targeting system combine to make the HE30 instantly usable, even for the most inexperienced operators.

(continued on other side)

(continued on other side)

(continued from other side)

Weighing only 8.6 ounces and ergonomically designed, the HE30 is activated with a slight squeeze of the trigger and can be used for extended periods of time without discomfort. Constructed of high-impact plastic, the scanner can withstand the rigors of everyday use.

A variety of interface and output options, transmission speeds, and other soft parameter selections address any auto ID application. Setup is simple and can be done through the serial interface port or by scanning special setup Data Matrix symbols supplied within the manual.

Finally, the compact design and high volume tooling assure that the HE30 hand held video image scanner delivers exceptional economics.

The HawkEye 30 scanner joins Auto Image ID's complete line of fixed-position and hand held 2D scanners and verifiers, providing a single source for fast and simple solutions to any 2D labeling applications. Auto Image ID scanners are becoming an integral part of automotive, pharmaceutical and electronics manufacturing processes. Contact Auto Image ID or your local representative to learn more about how Auto Image ID products can improve your automatic data collection performance.

The 2D Advantage... (continued from other side)

Direct marking can withstand harsh processing environments eliminating high cost special labels. Directly marked symbols are easily read with the LytePype™ lighting unit (Pat. Pend.) produced by Auto Image ID. The sample labels below (actual size) all contain a substantial amount of numeric information, including powerful error detection and correction, yet are all much smaller in area than a dense bar code label containing less than a dozen characters.



Typical Scanning Ranges

Read Range: 3 to 6 in. nominal w/ 2 to 5 in. depth of field
Field of View: 1.2 to 5.0 in. vertical x 1.7 to 7 in. horizontal
Feature Size: Standard; 6.6 mils 1D, 15 mils 2D
 High Density; 3 mils 1D, 6 mils 2D
Label Contrast: 25% minimum reflectance difference at 632 nm

Characteristics

Light Source: Ambient light supplemented with LEDs (660 nm)
Resolution: 659 x 494 pixels (nominal)
Code Types: 1D: Code 39, Interleaved 2 of 5, UPC, EAN, Code 128; 2D: Data Matrix

Interfaces: 9-Pin D connector (DTE)

Communications: RS-232, ASCII 7 or 8 data bits, 1 or 2 stop bits, baud rates from 1200 bps to 115.2 Kbps, parity: Odd, even, none.

Protocols: RTS/CTS

Power Requirements: Power Adapter (included) 100-250 VAC .5A 50/60 Hz or 12 VDC @ 600 ma AVE

Dimensions: 6" L x 2.3" W x 2.7" D

Weight: 4.8 oz. basic unit; 8.6 oz. with cord attached

Environmental: Operating temperature: 0 to 40 degree centigrade; Storage temperature: -20 to 65 degree centigrade

Humidity: Up to 95%, non-condensing

Warranty: One year limited parts and labor

Specifications subject to change without notice.

For More Information, Contact:



**"THE NEW DIMENSION
IN DIGITAL SCANNING"**